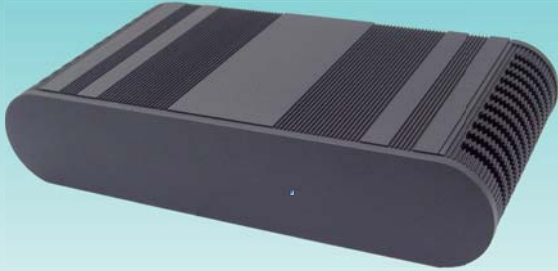


NEW

LEO Series

LEO Chassis without top-cover



**Excellent heat-dissipating function,
Dust-proof imperforate design**

Application :
Car PC, POS, ATM, Kiosk, VPN, Server

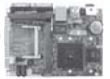
Technical Data :

• Dimension	50 H x 240 W x 124 D mm
• Material	Aluminum
• Color	Black
• VESA Mounting (option)	75 x 75 mm
• Weight	1.22 Kgs (Incl. M/B)
• Storage Space	2.5" HDD
• Operation Temp.	0 ~ 45 °C (2.5" HDD / CF Card)

Optional Accessory :

- Wall mount kit

M/B Information: (Please refer to M/B specification)



M/B Model	Description
3I270A	1 LAN, 1 VGA, 2 COM
3I270D	4 LAN, 1 VGA
3I525A	2 LAN, 1 VGA, 2COM
3I525D	4 LAN, 1 VGA



3I525A Back Panel

Dimension

